

# 050-1910 8mm Single Rotor Latch - Single Position



TriMark's newest innovation in rotary latches features a robust modular design that offers extensive actuation locations and options providing application flexibility in a compact design. Designed for medium to heavy-duty applications for on or off-highway applications, this single position latch is designed for non FMVSS 206 (ECE R11) configurations.

## **DESIGNED FOR:**

- Applications where it is desirable to have a single position rotary latch
- Interior door thickness of 45-57mm (1.77-2.25"). Depending on the actuator type and location the overall height could be greater. Please contact TriMark for specific details.
- Medium to heavy duty doors of 23-81 kg (50-175 lbs.) with maximum door seal pressure of 36 kg (80 lbs.)

## **Global Locations:**

**TriMark Corporation**  
500 Bailey Avenue  
P.O. Box 350  
New Hampton, Iowa 50659  
United States  
Tel: 641-394-3188  
Fax: 641-394-2392  
1-800-447-0343  
[www.trimarkcorp.com](http://www.trimarkcorp.com)

**TriMark Europe**  
Cedar Court  
Walker road  
Bardon Hill  
Coalville LE67 1TU  
United Kingdom  
Tel: +44(0)1530 512460  
Fax: +44(0)1530 512461  
[www.trimarkeu.com](http://www.trimarkeu.com)

**TriMark (Xuzhou)**  
Building A5 Jingwu Road  
Xuzhou Economic  
Development Zone  
Xuzhou, Jiangsu  
221004 PR China  
Tel: +86 516 8773 0018  
Fax: +86 516 8773 0058  
[www.trimarkcn.com](http://www.trimarkcn.com)



TriMark. Interactive. Product. Selector



TriMark



TriMark Corporation

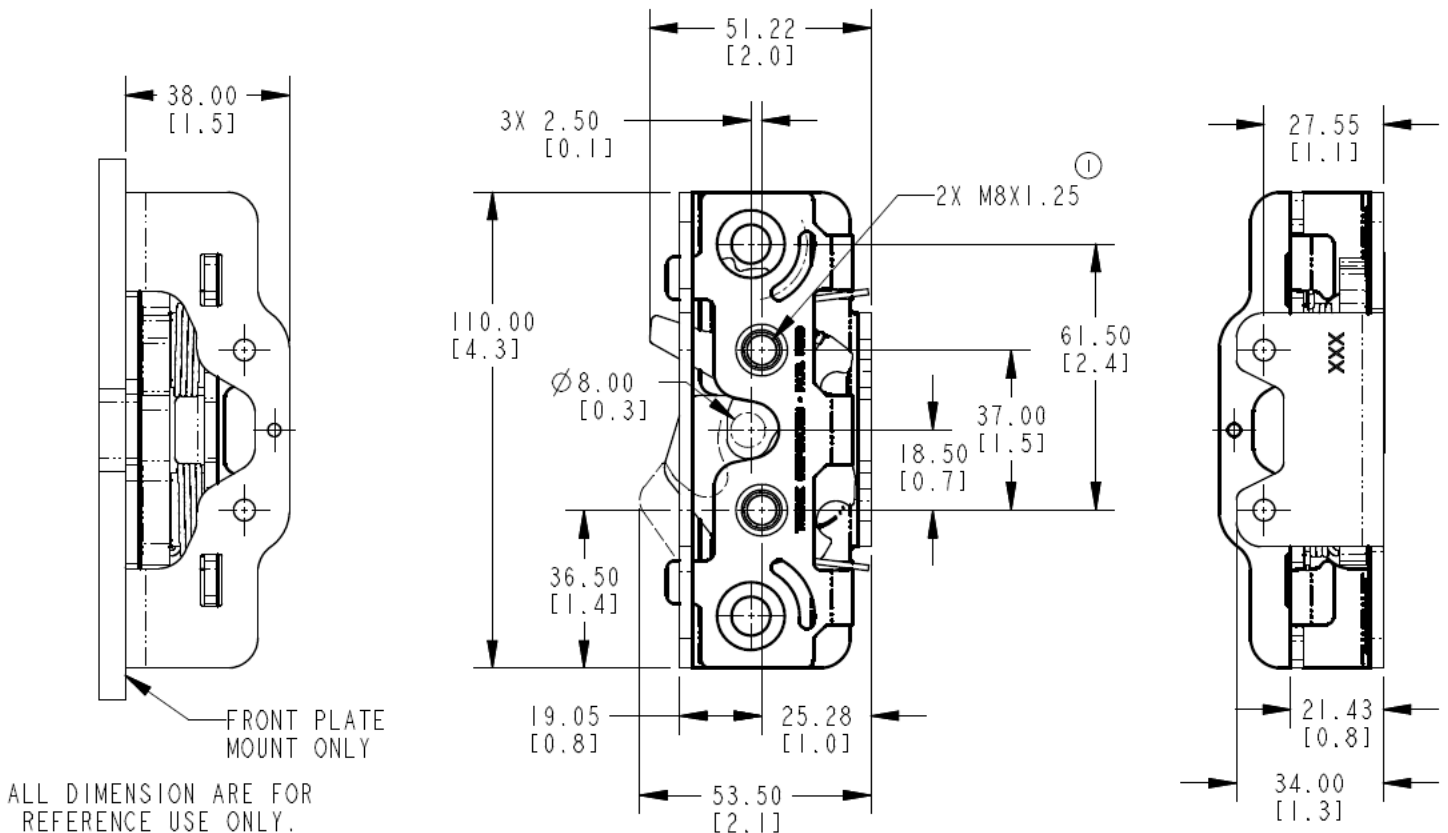
### FEATURES/BENEFITS:

- Modular case construction is preconfigured with multiple actuation points on the front case allowing top/bottom actuation including stacked actuators as well as combinations of actuation points providing the most configurable rotary door latch ever offered
- Compact size and shape allows maximum use of door space and minimizes visibility issues without compromising strength and robustness
- Rotor provides for vertical clearance of strike allowing for door sag, misalignment and ease of installation
- Single position version for compartment and door hold-open for non FMVSS 206 applications
- 8mm diameter automotive style hoop-type strike minimizes clothing snag hazard

### AVAILABLE:

- In left or right hand configurations (right hand shown)
- Versions are available to allow direct actuation from exterior push button or pull handles and interior releases providing a simple, low cost and compact application
- Platform allows for reuse of TriMark's extensive selection of existing actuation levers reducing application engineering and tooling requirements
- Several actuator return spring options
- Coaxial actuator mechanism for applications where it is desirable to provide additional support to the actuation levers
- Innovative barrel release for ease of use/installation
- Future provisions for state sensing, power release mechanisms and slam cam door lift mechanism

For more information visit  
[www.trimarkcorp.com](http://www.trimarkcorp.com)



Base Latch Shown Without Actuators



# 050-1910 8mm Single Rotor Latch - Single Position

## MATERIAL:

- Case halves: high strength steel
- Rotor and catch: heat treated steel
- Springs: non-corrosive stainless steel

## FINISH:

- Zinc plated, clear chromate steel components

## INSTALLATION:

- Easy to install, mounts with (2) M8 x 1.25 class 8.8 or better fasteners are required for FMVSS 206 (ECE R11) applications (not included)
- Tighten to manufacturers' recommended torque value, however, do not exceed 26.0 N-m (230.1 in-lbs)

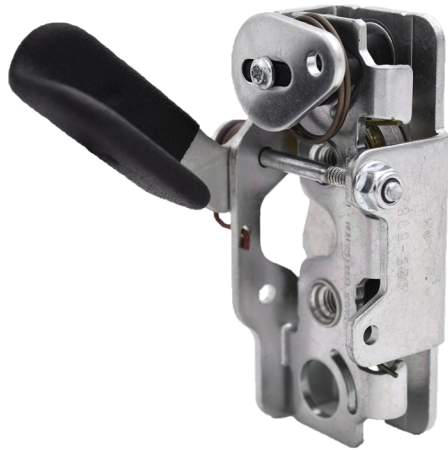
## USE WITH:

- TriMark 070-1000 8mm Hoop Strike
- TriMark 070-1300 Adjustable Striker

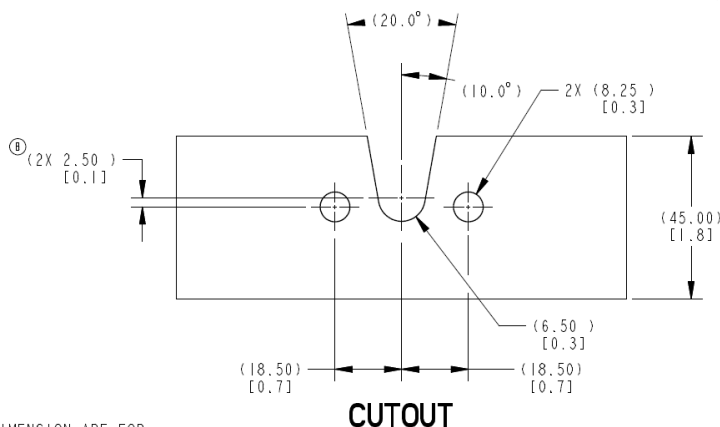
**U.S. Patent Nos. 10,676,967 / 10,697,207**

Individual part dimensions are for reference only. Refer to individual part drawings for complete dimensions, specifications, and installation procedures. Engineering assistance and application drawings are available.

**CAUTION:** Single position rotary latches do not comply with FMVSS 206 requirements



**Barrel Actuation With Direct Release Cam and Top Direct Release Actuator**



ALL DIMENSION ARE FOR  
REFERENCE USE ONLY.

**Mounting Details**

**070-1000 8mm Hoop Strike**



**070-1300 Adjustable Striker**



Modular construction with multiple actuation points allows top/bottom actuation including stacked actuators as well as combinations of actuation points.

